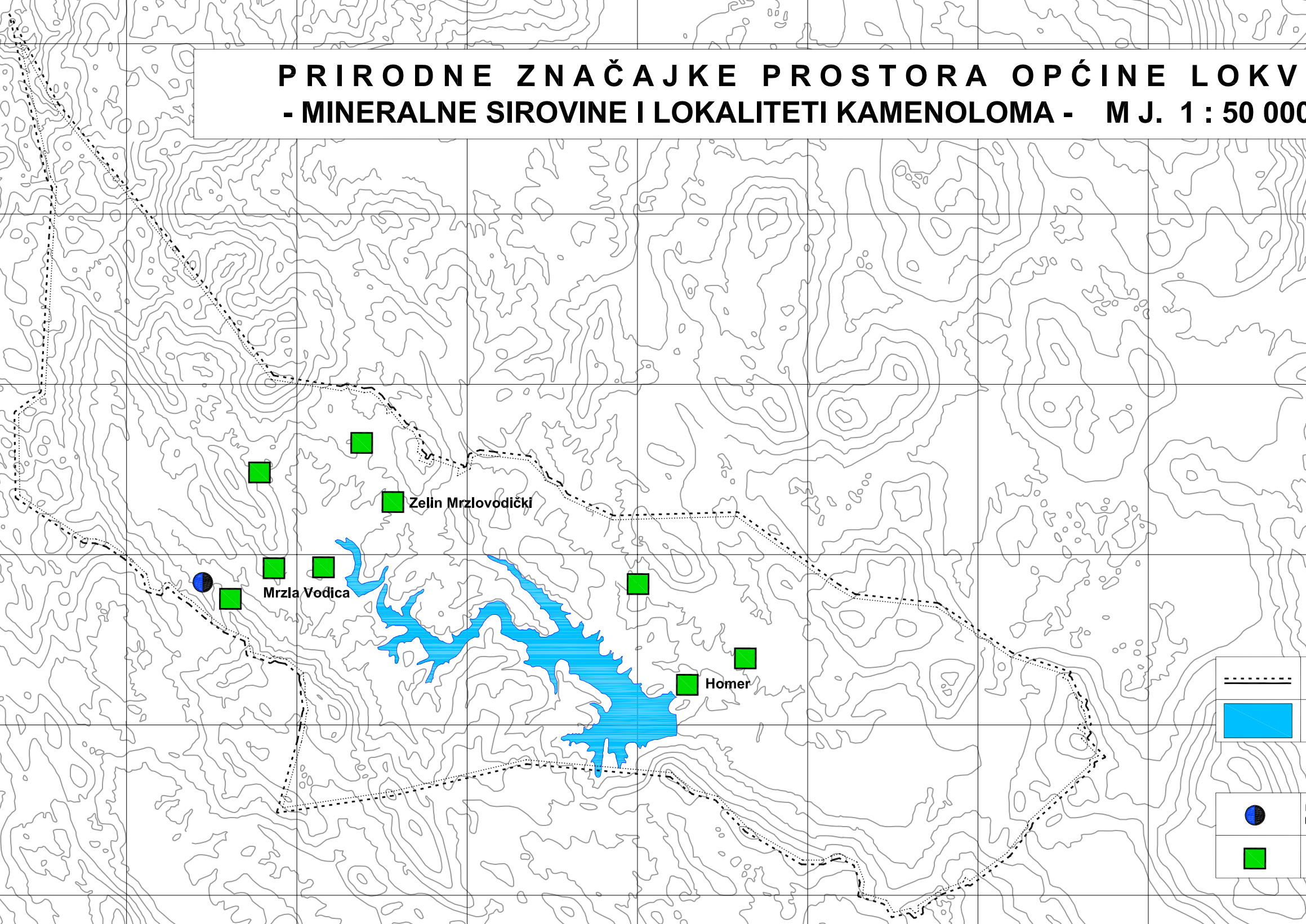






PRIRODNE ZNAČAJKE PROSTORA OPĆINE LOKVE - MINERALNE SIROVINE I LOKALITETI KAMENOLOMA - M J. 1 : 50 000



	GRANICA OPĆINE
	JEZERO
	POVREMENO AKTIVNI KAMENOLOM KARBONATNE STIJENE
	BARIT

Izvor podataka : Dokumentacija Prostornog Plana Županije

KARTA 1.4.